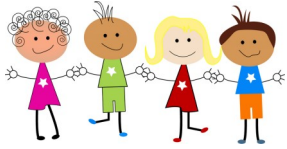
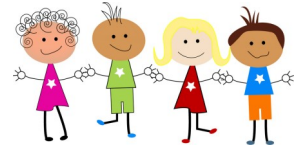


Reception Class Newsletter



Autumn 2019



We would firstly like to say a big thank you to everyone for welcoming us into your homes. You were all extremely welcoming and it was great to see the children in their own environments. It was also lovely to get to meet you and spend some quality time finding out about your child. We hope you have adjusted to your child being in school now! The children are settling into their new routines extremely well and we are delighted to see them coming into school on their own in the mornings. They have also now met their Year Six Buddies – I hope they have told you all about them!

In Reception the curriculum is based on seven areas of learning and development. The three prime areas are Communication and Language, Physical Development and Personal, Social and Emotional Development. There are also four specific areas, through which the three prime areas are strengthened and applied. These are Literacy, Maths, Understanding the World and Expressive Arts and Design.

We deliver this curriculum through activities and experiences based on themes and the children's own interests.



Communication and Language



Learning to read and write is clearly important. We put a lot of emphasis on phonics: the children will be learning about the sounds letters make and how to put them together to make words. They will also be learning to read words which can't be sounded out. We learn to write using the Kinetic Letters programme. We have organised a Parent's session to explain how this all works. It is on Tuesday 15th October at 2.30pm. It is really important that you attend this session so that you can support your child at home.

We will be sending a range of words to practise at home. You can help your child by sharing books with them and regularly practising their words and reading books. Please write comments in their red Reading Records. Encourage them to spot letters and their words in the world around them too!

Physical Development

We always have access to our trim trail and outdoor play area. We also have P.E. activities every Thursday. Please keep practising getting dressed and undressed with your child – those buttons are so very fiddly and lots of practise will help! When the weather is good, P.E. will take place outside. If your child has long hair it should already be tied up for school and it is especially important to have it tied up on Thursday. Please remove earrings before your child comes to school on a Thursday – staff are not allowed to remove them for the children and they are not allowed to do P.E. if they are wearing them.

Personal, Social and Emotional Development

The personal, social and emotional development of the children is very important and we shall be encouraging them to become independent and confident and to build good relationships both with adults and with each other. Further to this, we have a whole school approach to develop a 'Growth Mindset' here at The Ridge. We have been delighted to see that we are already developing motivated learners who embrace challenge and learn from setbacks or difficult tasks. Indeed, our challenge to dress ourselves, including fastening buttons is one we intend to focus on this half term. Remind them that Dolphin Dave says, "Don't Give Up!" We also create a 'have a go' environment where the children will all feel confident to try new things.

Maths

The children's maths work will focus mainly on mental and practical activities and will include lots of number recognition and counting. We will also be developing their understanding of shape and measures. You can help by counting at every opportunity, playing matching games and spotting numbers and shapes everywhere!

Understanding the World

In this part of the curriculum the children will be looking at patterns, investigating materials, constructing with a variety of resources and finding out about their environment. The aspect of 'People and Communities' will also be covered in this area of learning.



Expressive Arts and Design

The children will be encouraged to develop their creative skills in a variety of ways. There will be opportunities for them to work with musical instruments; to use their imaginations in art and design, dance and in role play; and to explore a range of materials.

General Points

We will sometimes send home learning to reinforce activities being done in school and so that you can see what the children are doing. But we also ask that you practise their words and read with them as often as possible. Please send in anything of interest to your child at any time so that they can share it with the rest of the class. We use an electronic Learning Journey and add to this regularly. You will have opportunities to see this during the year.

Water Bottles and Bags

Could children remember to bring their water bottles each day. Can we ask that they aren't put in book bags in case they leak and that they only contain water. If children would like a keyring on their bag can it please only be one and be small as they won't fit in trays.



Uniform

Thank you for spending the time to label your child's uniform. Can we ask that you check it regularly to ensure that the labels haven't faded or come off. Children need to bring a coat into school each day, as we are outside in all weathers. Could you label their coat too please.

Wellies

Children may need a pair of wellies at different times throughout the year however we will let you know when they will need to bring them in.

Lunchtime

Could you please complete the form for your child's choice of lunch and send it in each Monday. The children have been trying really hard to use their knives and forks so if you can, encourage this at home too please.



Dates for your Diary

Harvest Festival - Thursday 26th September 10.00am and 2.15pm

Phonics, reading and kinetic Letters workshop - Tuesday 15th October 2.30pm

Christmas Performance - Thursday 5th and Friday 6th December 10.00am

We will be arranging a 'Family Learning Morning' during the year and would love for you or Grandparents to join us -we will let you know when this will be happening. Please come and speak to us if ever you have any questions, worries or concerns. We are here to help and really want you and your child to enjoy their time in Reception. My email address is lmelia@ridge.dudley.sch.uk and we welcome any photos emailed to us from home to share with the other children. Many thanks for all of your help and support, it is really appreciated.

Mrs Lara Melia and Mrs Karen Mangan